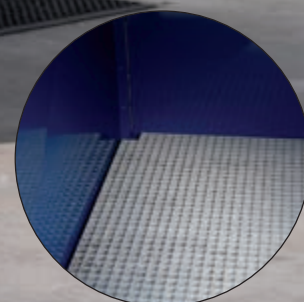


COVERED TRAPPING TUBS FOR IBC CONTAINER



Hot-dip galvanized grate detail.



Type: 7245 ▲

- Suitable for safe and model storage of liquids presenting a danger to water in IBC containers.
- Single-leaf lockable gate ensures comfortable access to stored containers.
- Sturdy structure for safe placing of IBC container.
- In the front part there is a removable hot-dip galvanized grate for easy tapping of liquids.

210 kg

1,200 x 1,520 x 2,450 mm

Trapping volume: 1,000 l

Capacity: 1 IBC container with a volume of max. 1,000 l

Type: 6087 ▼

- Variant of storage for 2 IBC containers.

More information in the section "RACKS FOR STANDING BARRELS AND CONTAINERS"

