

WORK TABLES PROFI



- Professional self-assembly work tables. Wide range of segments permits to assemble versions as requested by customers. The table base is formed by its work surface in two lengths, stretchers in firm or adjustable version, cabinets and containers. Stretchers and containers are screwed directly to the bottom part of the table work surface. Cabinets and containers 810 mm high form a table leg at the same time. When using segments 810 mm high or firm stretchers the table total height is 850 mm, when using a set with two stretchers, it is suitable to connect the stretcher with appropriate brace. Table work surface load capacity is 500 kg, individual drawer load capacity 80 kg.

	UNDERHUNG CONTAINERS			CONTAINERS – CABINET			
TYPE	3433	3434	3435	3153	3154	3436	3152
No. of drawers/shelves	1	3	2	3	5	1/1	1
M. dimensions (mm)	212 x 700 x 500	340 x 700 x 500	340 x 700 x 500	810 x 700 x 500	810 x 700 x 500	810 x 700 x 500	810 x 700 x 500

Fixed footrest

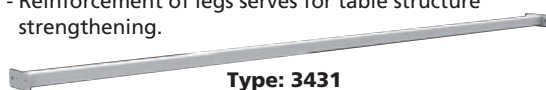
- Height = 810 mm.

Adjustable footrest

- Adjustable by 35 mm.
- Height = 790–1,030 mm.

Reinforcement

- Reinforcement of legs serves for table structure strengthening.



Type: 3431
For tables 1,500 mm long.
Type: 3432
For tables 2,000 mm long.

Type: 3429



Type: 3430

Table worktop



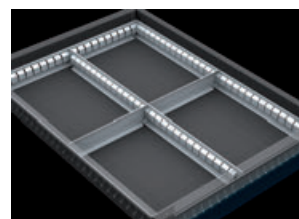
- Table work surface from massive beech water-proof glued laminated wood 40 mm thick.

Type: 3427
750 x 1,500 mm.

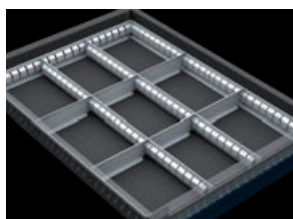
Type: 3428
750 x 2,000 mm.

Drawer dividers

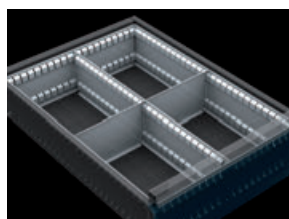
For drawers 60–120 mm high



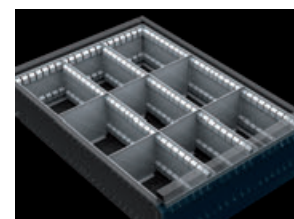
Type: 3484



Type: 3485



Type: 3486



Type: 3487

For drawers 150–240 mm high