

# PLASTIC STORAGE BOXES

- Three sizes of classic storage boxes. They serve for well arranged placing and storage of small objects. Front bevel of boxes permits to insert or remove objects without dismantling the stack of boxes.

- The containers are widely used in stores, assembly shops, workshops, garage racks and the like.  
- The possibility to stack the boxes saves necessary space in working areas.



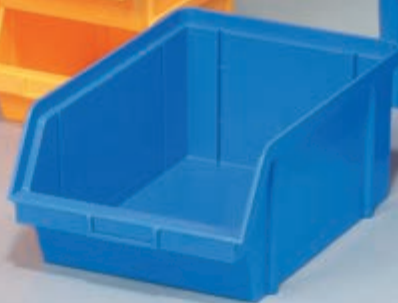
Type: 6492



Type: 6494

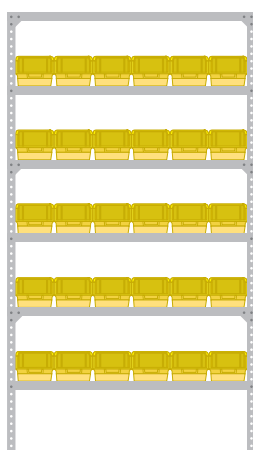
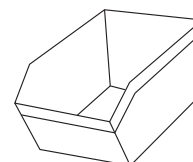


Type: 6493



**best price**

TYPE	DIMENSIONS (mm)	THERMAL ENDURANCE °C	WEIGHT (kg)	LOAD CAPACITY (kg)	COLOUR
6492	400 x 300 x 162	-20 - +50	1.3	40	red
6493	300 x 200 x 142	-20 - +50	0.55	20	blue
6494	200 x 150 x 122	-20 - +50	0.26	10	yellow

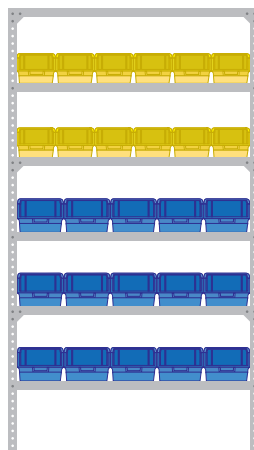


**Shelving I**

Type: 6191 – Shelf rack

↓ 1,000 x 305 x 2,000 mm

+ 30 x Type: 6494 – Plastic storage box

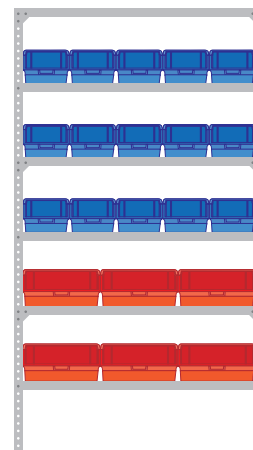


**Shelving II**

Type: 6191 – Shelf rack

↓ 1,000 x 305 x 2,000 mm

+ 12 x Type: 6494 – Plastic storage box  
+ 15 x Type: 6493 – Plastic storage box



**Shelving III**

Type: 6195 – Shelf rack

↓ 1,000 x 457 x 2,000 mm

+ 15 x Type: 6493 – Plastic storage box  
+ 6 x Type: 6492 – Plastic storage box