

SPARE PARTS FOR PLASTIC CONTAINERS

Individual parts of plastic containers are compatible only with the containers made by the company "EUROPLAST", as standard they are delivered without fasteners. Colour versions by agreement.

Colour design



Lid for 120/240 l bins with pins



Type: 0004-A
Lid 120 l

Type: 0005-A
Lid 240 l

Type: 0004-C
Pin 1 pc 120/240 l

Inner tube wheel and shaft 120/240 l

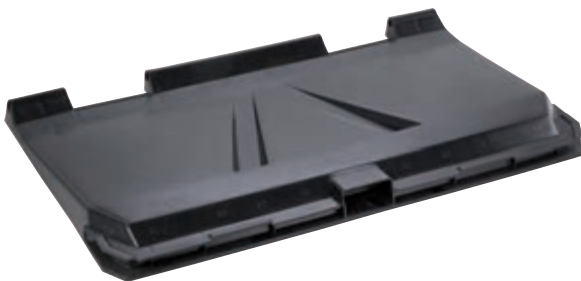


Type: 3013
Inner tube wheel 120/240 l

Type: 6023
Shaft 120 l

Type: 6024
Shaft 240 l

Flat lid 660 and 770 l



Type: 0021-V
Flat lid 660/770 l

Flat lid 1,100 l



Type: 0013-V
Flat lid 1,100 l

Round lid for containers 1100 l



Type: 0014-V
Round lid for containers 1,100 l

Lid in a lid 1100 l



Type: 0014-VV
Big lid for containers 1,100 l

Type: 0014-MV
Small lid for containers 1,100 l